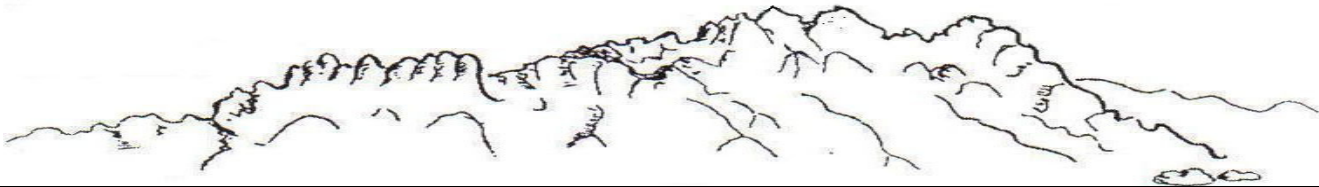


The VOTER

League of Women Voters
of Greater Las Cruces
(575) 524-VOTE (8683)
Web Site: www.lwvglc.org
November 2010



Lunch With a Leader - November 8, 2010

Good Samaritan Social Center, Creative Arts Room, 3011 Buena Vida Circle, 11:30 a.m.

Collaboration Results in Ethics Training for New Mexico Public Leaders

Diane-Michele Prindeville, Ph.D, Department of Government, New Mexico State University

During the summer, 2010, Dr. Prindeville was awarded a fellowship from the Bill Daniels Foundation to create collaboratively an ethics curriculum for New Mexico state legislators, other elected and appointed officials, and public administrators throughout the state. Collaborators in the ethics project include the NM EDGE, the NMSU College of Business, the NM Ethics Alliance, and a working committee made up of leaders from around the state. The working committee recently completed the first draft of a proposed ethics certification for New Mexico public officials and public administrators.

Dr. Prindeville is the Director of the Masters of Public Administration Program at New Mexico State University and the Academic Director for NM EDGE, a program of the NMSU Cooperative Extension Service that provides customized training for elected officials and public administrators in New Mexico.

Dr. Prindeville's educational credentials include: a Ph.D., Political Science, University of New Mexico; MPA, Public Administration and BS, Criminal Justice, Arizona State University. Her previous work experience was in rural community development and public management. Her teaching and research interests include leadership, ethics, and collaborative governance. Come join us.

CALENDAR

November 1 (Monday) - **Deadline for Reservations for Lunch with a Leader.** RSVP Sharon Burbano (526-2860 or Email: sburbano@aol.com). **Reservations are required.**

November 2 - **General Election**



November 3 (Wednesday) - 1:-2:30 p.m., **Board Meeting**, Branigan Library, Board Room

November 8 (Monday) - 11:30 a.m., **Lunch with a Leader** at Good Samaritan Society, Social Center, Creative Arts Room, 3011 Buena Vida Circle. **Topic: Collaboration Results in Ethics Training for NM Public Leaders.** Lunch is \$8. **Reservations required.**



November 13 (Saturday) - 9:00 a.m. - 1:00 p.m., **Electronic Recycling**, County Government Bldg, 845 Motel Blvd.

Notable Events in November:

7 - Daylight Savings Time Ends
11 - Veterans' Day
12 - Elizabeth Cady Stanton's Birthday (1815-1902)
25 - Thanksgiving

Save This Date:

December 11 - 9 a.m. - Legislative Breakfast,
Good Samaritan Social Center, Main Dining Room

The VOTER

Volume 41, Issue 7 - November 2010
Published Monthly

**The League of Women Voters of
Greater Las Cruces**

P.O. Box 8322
Las Cruces, NM 88006-8322
(575) 524-VOTE (8683)
Web Site: www.lwvglc.org

President - Bonnie Burn

Vice President & Program
Sharon Burbano

Secretary - Martha Duran

Treasurer - Barbara Goedecke

Director, Membership
Susan Schmutge

Director, Voter Services
Erika Graf-Webster

Nominating Committee
Donna Tate, Chair
Jane Carter, Elected Member

Director, Public Relations
Roberta Gran

STUDY GROUPS

Affordable Housing
Vicki Simons - 522-4813
Christina Little - 373-1882

Education
Bonnie Burn - 526-0013

**Mental Illness Services
in Doña Ana County**
Becky Beckett - 522-8171
Mickey Curtis - 532-5655

**Election Procedures and
Voter Turnout**
Marnie Leverett—522-0347

Metropolitan Court
Marjorie Burr - 522-2528

ACTION COMMITTEE
Vicki Simons - 522-4813

Archivist - Barbara Myers
Web Master - Dale Yeo

Newsletter Editor
Bonnie Burn - 526-0013
burnb@comcast.net

President's Message

Busy time! Busy time! Many kudos and thank yous are due the individuals who helped with our voter services activities during this mid-term election—two successful candidates' forums, a *Voters' Guide*, and voter registrations that included 36 high school students. The League continues to be recognized for its voter services activity through phone calls about voting and requests about forums and the *Guide*. No one will miss the "robo" calls. Campaign finance has to become a priority focus for the League.



Look for new information about how you can reduce your carbon footprint, p. 6, "What's on Your Rooftop?" The NM Government Restructuring Task Force, p. 8, is winding down its work as the December 1 deadline for reporting findings and recommendations is almost here. Please note the Affordable Housing Study Committee report, p. 4. Co-Chairs Simons and Little are writing about their meetings with outside agencies. These articles are background papers for the study. The committee is beginning to educate us in preparation for our unit meetings and consensus activities farther down the road.

As we move into November, I want to acknowledge a special birthday of a famous suffragist, Elizabeth Cady Stanton (1813-1902). She never voted, but without her efforts women today would not have the vote. To League members, Stanton is a familiar name. She was the precursor of women who manage marriage, children (7), and a job. Her collaboration with Lucretia Mott resulted in the 1848 Seneca Falls, NY, convention that called for voting rights for women. Although Stanton remained at home with her family, her meeting with Susan B. Anthony resulted in a team effort—Stanton writing and Anthony delivering her speeches. In 1868 she founded the National Woman's Suffrage Association and was president until 1892. That organization morphed into the League of Women Voters. Happy Birthday, Elizabeth!

Bonnie Burn

Board Highlights - October 6, 2010, 11:30 a.m. - 1 p.m., Branigan Library

- Discussed the LWVSFC Transparency in Government position that was suggested at State Council for consideration as a concurrence position to be adopted by State at its Convention in May. GLC's Board was not in favor of adoption without a state study.
- Reviewed final voter services schedule of activities that included publication of a *Voters' Guide* (The Bulletin, October 15), and a candidates' forum on October 20.
- Established that the current membership count stands at 98.
- Reviewed future plans for Lunch with a Leader programs.

The League of Women Voters of Greater Las Cruces, a nonpartisan political organization, encourages informed and active participation in government, works to increase understanding of major public policy issues, and influences public policy through education and advocacy.

Look Back –United Nations at 65

Bonnie Burn, Reporting

October is designated as United Nations month and on October 24 the United Nations (UN) celebrated its 65 anniversary. To recognize these events, Professor Yosef Lapid, Regents Professor in the Department of Government, NMSU, responded to the question, "Can the UN Promote Peace and Security in the 21st Century?" at the League's Lunch meeting on October 11.

League members were reminded that the UN was established after two major world wars had been fought and the first effort to coalesce nations, the League of Nations, had failed. An organization was needed to bring all nations together to work for peace and development based on the principles of justice, human dignity and the well-being of all people. The UN is often misunderstood. It is not a world government. The General Assembly is the closest thing we have to a world parliament. The UN does not have a standing army; the peacekeeping forces are made up of volunteers from member nations. It is dependent upon member nations, who sometimes fall in arrears, for its financial resources. It is, however, the only organization that deals with world functions such as peace, security, and social issues—not only military issues.

Over the years the UN's achievements have been extensive including winning seven Noble Prizes for its peace keeping function. Recognizing some developing countries by seating them in the Assembly and on the Security Council and extending the veto power to member nations beyond the current permanent five (China, France, Russia, the United Kingdom, and the United States) are areas that need improvement. The UN's power is sometimes weakened when countries meet in organizations outside the UN which is happening more lately. Government heads, finance ministers, and other governmental officials meet as G-7/G-8 organizations that are made up of the industrialized nations of Canada, France, Germany, Italy, Japan, the United Kingdom, the United States, and more recently Russia. Since 2008, G-20 has been growing in importance and may replace the G8 as the main economic council of wealthy nations.

The League of Women Voters has been involved with the United Nations since its inception in 1945, first in an advisory capacity to the U.S. delegation and then as a UN Observer. Periodically, through its education fund, the LWVUS hosts "League Day at the UN" to provide League members an opportunity to visit the UN, speak with UN officials and learn more about the work of its agencies.

The United Nations is our one great hope
for a peaceful and free world.

Ralph Bunche

Welcome



New Members

Dolores Connor
142 Lytton Circle
Las Cruces, NM 88001
Tel: (575) 527-1750
Email: dconnor@las-cruces.org

Email Change:

Roberta Gran
kathleenkent@yahoo.com
(As of November 1)



GET CAUGHT RECYCLING

Get "caught" recycling at one of the recycling drop off centers by the Get Caught Recycling team in November, December or January, **YOU** win an instant prize and are eligible to win the grand prize — a trip for two to Las Vegas or San Diego

Barb's Flowerland



We can do it all!

Arroyo Plaza
**2001 E. Lohman
Las Cruces**

575-525-1850

www.BarbsFlowerlandInc.com

"Women Win the Vote"
Table Centerpieces

Affordable Housing Study Committee

Vicki Simons and Christina Little, Co-Chair

The League's Affordable Housing study committee, in order to learn about administration and funding of available programs, is meeting with all agencies in Las Cruces that provide affordable housing. Our first meeting was with David Dollahon, Neighborhood Services Administrator, who supervises federal housing programs and the Juvenile Citation Program for the City of Las Cruces. The September 23 meeting included Jan Lauterbach, who works with the HOME program, and Vera Zamora, who works with HOME and CDBG compliance.

The two main sources of funding for the city's affordable housing program are federal programs. Both of these programs are entitlements and the yearly distributions are based on formulas that consider population, percentage of people living in poverty, and other variables. Each program has strict regulations about how the monies may be used:

- Community Development Block Grants (CDBG) from which the city receives \$1.1 million. During the last ten years this source has provided a range of \$890,000 to \$1.7 million. This program designates money for multiple uses. They are streets and sidewalks in low income areas, public facilities (Tresco, Community of Hope, La Casa, etc.), job creation (not tried in Las Cruces yet), land acquisition, land clearing (demolition of abandoned buildings), public services (15% or approximately \$160,000 has been used for operating expenses of outside agencies such as Jardin del los Niños, La Casa and Casa de Peregrinos to serve low-income individuals), and home rehabilitation.
- HOME Program, stands for HOME Investments Partnership Program, has provided about \$537,000. In the last ten-year period, funding has fluctuated between \$480,000 and \$570,000. The HOME program is all about partnerships. It can be used for the following purposes: new construction and land acquisition; rehabilitation, down payment assistance; tenant-based assistance; and Community Housing Development Organizations like Habitat for Humanity, Community Action Agency or Tierra del Sol, all of which provide affordable housing.

There are several other smaller federal programs that aid affordable housing programs.

The city council appointed an Affordable Housing Ad Hoc Strategic Planning Committee that issued a report in 2009. One of the proactive strategies to increase capacity to fund affordable housing the committee identified was to develop a land bank and a trust fund. The draft ordinance to create the Land Bank and Trust Fund was reviewed by the City Council in September, and will be voted on November 1, 2010. The two entities could do the following:

- The Land Bank would provide a mechanism for the city to receive land for the development of affordable housing. The land could be acquired through donations, purchase, land swaps, etc.
- The Trust Fund is a fund like a bank account from which money could be used for various affordable housing needs. Funding might be from grants, state legislative funding, bond funds from Las Cruces Gross Receipts Recycling Program, or general obligation bonds.

If you would like further information about the meeting with David Dollahon, contact Christina Little (373-1882) or Vicki Simons (522-4813) and ask her to forward minutes from the meeting.

The committee's next meeting is with the Las Cruces Housing Authority. The meeting will be November 9 at 2:30 p.m. at the Housing Authority Conference Room, 926 S. San Pedro. League members are invited to attend and/or join the committee.



Voter Services Update

Erika Graf-Webster, Director

With the election on November 2, the voter services activities for 2010 are nearing the end. We achieved the goals we set for ourselves at the start, while also learning a number of lessons for making things go better and smoother in the future. Our focus during the past month was on the two activities discussed below.

Voters' Guide: Dale Yeo, the LWVGLC and LWVNM *Voters' Guide* Committees are to be commended for their efforts in gathering an enormous amount of information that was squeezed into a 12-page *Guide*. Dale Yeo made several trips to the Bureau of Elections to obtain a list of the declared candidates and their related information. We also received information on the state candidates from the state League (LWVNM). In total, 61 candidates were listed in our *Voters Guide* – all that appear on our local ballot. LWVNM provided local Leagues with information about amendments and bond issues received from the Secretary of State. After proofreading, the *Bulletin* did the lay-out of the *Guide*, and printed 24,500 copies, of which 20,000 were distributed as part of the October 15 *Bulletin* issue, 3,000 were purchased by NMSU, and the remainder were distributed to a variety of community service entities such as libraries, hospitals and churches.



Candidates for County Commission and County Assessor address the audience and answer questions.

October 20 Candidates' Forum:

The League hosted the candidates for local offices at a forum moderated by Bonnie Burn on October 20 at Good Samaritan Auditorium. All but one (due to a family emergency) of the 19

candidates invited attended the forum. The offices covered were the County Commissioners, County Assessor, County Sheriff, County Probate Judge, and the Magistrate Court Judges. The event was well attended by approximately 125 voters. The attendees were provided with a handout developed by the Voter Services Committee that named and described the responsibilities of the offices and listed the candidates for each. In addition, the League offered copies of the *Voters' Guide* as well as the most recent *Who's Who* and other League materials to the attendees. Numerous questions were submitted by the audience, but time ran out before all the questions could be asked. Comments by both the attendees and the candidates after the event were very positive. The forum was described as very useful. The candidates all thanked the League for hosting such an event.

Legislative Breakfast: The next major voter services activity is our Legislative Breakfast scheduled for Saturday, December 11, 9 a.m., Good Samaritan Main Dining Room. **Save this date on your calendar.**

League Angels

Voter Registrars:
Tom Schmutge, Chair
Johnnie Aldrich
Bonnie Burn
Carol Jackson
LaJune Smith
Kathy Wooten

**Candidates' Forum
Timekeepers**
Nancy Anderson
Cliff Pelton
Bob Burn

Question Reviewers
Johnnie Aldrich
Marjorie Burr
Win Jacobs
Marnie Leverett

Greeters
Shirley Armstrong
Fran Clark
Erika Graf-Webster
Nancy Phillips
Susan Schmutge
Dale Yeo

Moderators:
Vicki Simons
Bonnie Burn

Voters' Guide
Dale Yeo, Editor
Sharon Burbano
Bonnie Burn
Marnie Leverett
Erika Graf-Webster
Vicki Simons

Thank you!

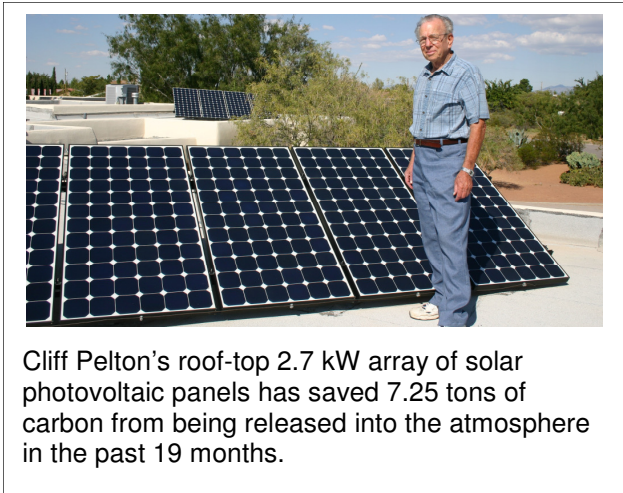
**FIND YOUR PRECINCT
November 2 - Election Day**

CALL 524-VOTE (8683)

WHAT'S ON YOUR ROOFTOP?

Alex and Marjorie Burr, Reporting

League members Cliff Pelton and Pat Kratz don't pay electric bills. In fact, El Paso Electric (EPE) often owes them money at the end of the month. They have installed solar photovoltaic (PV) electric energy systems on their roofs. Southern New Mexico is an ideal place to "harvest" solar energy on your rooftop. Here the sun shines, by some counts, 350 days a year, and the altitude is high enough to keep the ambient air relatively cool; hence, the efficiency of solar photovoltaic cells is high. The technology and cost of the photovoltaic cells are at a point where installing and using them is a feasible operation for the homeowner.



Cliff Pelton's roof-top 2.7 kW array of solar photovoltaic panels has saved 7.25 tons of carbon from being released into the atmosphere in the past 19 months.

Solar photovoltaic panels are sheets of glass covering silicon cells that create a DC current when they are struck by rays from the sun. At the end of the panel or series of panels is an inverter that converts the DC into AC current at 220 volts. This current runs through a wire to the circuit box of the building. It can be used by the household to power whatever lights and appliances are drawing current at the time. If the solar cells are generating more electricity than is needed by the household at that time, the electricity runs through the meter out into the grid. Thus, the meter will run backward. If, at the end of the month, you have generated more electricity than you have used, EPE will pay you for this energy. The rooftop-generated electricity also runs through another meter on the house. For this energy, EPE is currently paying 12 cents per Renewable Energy Credit (REC). A REC is roughly equivalent to one kilowatt hour. EPE uses the RECs that it purchases from you to help fulfill the

requirement of the NM Public Regulation Commission that a certain percentage of its production of electricity be from renewable energy sources. The homeowner is paid for a REC whether he/she uses the energy, or it is contributed to the grid.

There are at present good financial incentives for a homeowner to invest in a photovoltaic energy system. The federal government offers a 30% tax credit to the homeowner for the cost of the system. The NM state government offers another 10% tax credit off the homeowner's state tax. Furthermore, there is now no sales tax (GRT) on the cost of the system. Thus, the actual cost of the system to the homeowner is about 40% of its actual price. What's more, although a solar photovoltaic system adds value to a home, the property tax will not be increased.

Still, the installation of a solar PV energy system is a considerable investment. The size of the system a homeowner installs will depend on two factors. First, the current electricity usage of the household determines the amount of electricity you may want to generate on your rooftop. Second, you can decide as a homeowner/EPE customer/environmentalist, how much you want to reduce your carbon footprint. If you want to break even on your electricity bill, you will probably choose a system that generates about half your electricity needs. The electricity generated, plus the refund from El Paso Electric for renewable energy credits will, over a year, about zero out your electric bill. If you would like to play a bigger part in providing carbon-free electricity for the grid, you can install more collectors. Add into your calculations the fact that the carbon credits necessary to manufacture the cells are much less than the carbon credits used to build and operate coal-fired electric power plants.

A simplified way to calculate the payback time for the system is to subtract the amount of savings and income from the initial cost of the system. When the monthly amounts accumulate to the original cost of the system, you will have paid back the initial cost and probably will have some value still left in the system. Your accountant will want you to add in such things as system maintenance and the cost of money. Maintenance costs are low, and money costs little nowadays.

Solar PV panels can be installed on a flat or pitched roof, on top of an outbuilding, or even on the ground on your property. They must face south at a 30-

degree angle from ground level and be unshaded. Many cost-effective systems are connected to a grid, but a battery storage system can make the homeowner completely independent of the grid.

Cliff Pelton (381-2173) and Pat Kratz (522-1151) will be happy to show you their systems and tell you about their experiences. Just give either one a call.



“Picturing El Paseo” – *Carol McCall, Planner, City of Las Cruces Community Development Department*

The City of Las Cruces is working with experts from the U.S. Environmental Protection Agency, the U.S. Department of Transportation, and the U.S. Department of Housing and Urban Development in an effort to increase public involvement in planning projects. Las Cruces is one of only four cities to receive this "Smart Growth Implementation Technical Assistance," that provides staff and expertise from these federal agencies to help create a vision for El Paseo Road that reflects community needs and desires.

El Paseo Road was chosen as a pilot project for this effort because it is an important link between downtown and the University District. In addition, the El Paseo/Idaho intersection is the most dangerous intersection in the city for motorists, pedestrians and cyclists, and the corridor lacks facilities such as sidewalks and safe walkways through large parking lots. It also has the highest commercial vacancy rate in the city. The vision for El Paseo Road could guide future redevelopment efforts to integrate housing, transportation choices, clean energy and equitable development.

A number of meetings are planned that involve decision makers and people who live and use this corridor. In early October, city councilors and planners, business owners, nonprofit leaders, legislative representatives and members of the general public participated in a visioning workshop to express their concepts for this area.

A three-day, public event is scheduled for November 18-20 that will include walking tours, mapping and visualization exercises, photo collection and story telling, and technical presentations. City staff specifically wants to involve people who don't ordinarily attend public meetings or who are not accustomed to expressing their views about city projects.

The project's website www.picturingelpaseo.org has a survey requesting people's ideas for the corridor, and a wealth of information on work groups and scheduled events. For more information, contact Carol McCall at 528-3209 or cmccall@las-cruces.org

JOIN THE LEAGUE TODAY - Bring a friend with you!

Membership Type	Those joining after November 1 pay half-dues.
Individual ___ \$50	Contribution to the League \$ _____
1st & 2nd Household ___ \$75	Contribution to the Education Fund (tax deductible) \$ _____

Name(s): _____

Address: _____

City/State/Zip: _____ **Phone:** _____

Email: _____

Mail checks made out to LWV oF Greater Las Cruces, P.O. Box 8322, Las Cruces, NM 88006-8322

New Mexico Government Restructuring Task Force

Observers, Kathy Campbell, President, LWVNM
Meredith Machen, President, LWVSFC

This task force is winding down its activities as it moves toward a December 1 deadline to report its findings and recommendations to the governor and legislators.

The meetings were held October 14 and 15. The focus for the October 14 meeting was two presentations from the Higher Education Department (HED) and a few reports from the Legislative Council Staff (LCS). October 15 involved discussions of numerous bills drafted at the request of the task force, or in a few cases further discussion of "bill concepts" suggested at earlier meetings.

The morning session was devoted to a presentation by Dr. Viola Florez, secretary of HED. Her handouts included a table of contents for the proposed State Master Plan for Higher Education, a 12-page draft of recommendations, a map showing public and tribal campuses and other sites for higher education, and a diagram of the institutions overseen by the department (including at least 120 private schools in addition to the public institutions for which HED has accreditation responsibilities). Over the past few months HED has held 16 town halls around the state that she considered a great success and also solicited information through a web-based survey to which about 2,000 individuals responded. The recommendations in the draft are based on this input. Dr. Florez spent more than an hour going through the recommendations in detail. One recommendation stands out: she does not recommend combining the Higher Education Department (HED) and the Public Education Department (PED) as a remedy for solving any problems in education. The secretary noted that the cultures and products are so different that just lumping them together is no solution. Florida did that a few years ago and is now trying to separate them again.

The Friday session was observed by Meredith Machen. Extensive handouts on bills and recommendations were available at the meeting and should be posted at the legislative website well before the November meetings.

Chair of the subcommittee, Michelle Lujan Grisham, former Secretary of Health as well as Aging and Long-Term Care, now owner of Delta Consulting Group that specializes in strategic planning and program development, was the main speaker.

She went over in great detail a 15-page, complex chart describing 314 state boards and commissions and their roles. The chart included boards, commissions, committees, and councils that are administratively attached to cabinet departments, those under the governor's control and those that are constitutionally created bodies such as the boards of regents, the public regulation commission, the public education commission and the state transportation commission. Many entities are policy making and are authorized by our legislature or required by federal statutes, rules, or grants. Some advisory boards and committees are also required by state statutes.

The afternoon session focused on bill drafts and staff reports. Some of the recommendations included:

- Create a Commerce Department to administer the current Departments of Economic Development, Tourism, and Workforce Solution; Regulation and Licensing; Workers' Compensation Administration; Border Authority; and Spaceport Authority.
- Expand the Department of Finance and Administration to include the General Services Department, State Personnel Office and eliminate the General Services Division.
- Pay the same per diem and mileage rate to all public officers and employees.
- Combine Homeland Security and Fire Marshal with Department of Public Safety.
- Move Motor Transportation Division to Department of Transportation.
- Combine Department of Environment and Energy, Minerals, and Natural Resources.
- Add exempt salaries into general appropriations bill.

The next meetings are scheduled for November 22 and 23. A meeting on November 11 will cover the recommendations of the Legislative Education Study Committee (LESC).

LEAGUE OBSERVER REPORTS

The League's Observer Corps enables greater coverage and information gathering, can provide early warning of upcoming issues of concern, can increase League's visibility, and can assist in networking with other groups. We appreciate the reports that are submitted by Observers. Following the League practice of publishing nonpartisan, objective reports, the information submitted may be edited for content and brevity.

South Central Solid Waste Authority, October 21, 2010, 9 a.m., Dona Ana County Government Building - Johnnie Aldrich Observer

After the excitement of last month's acceptance of curbside recycling by the Las Cruces City Council, this month's meeting seemed anti-climactic. "Curbside recycling" was never mentioned today.

In his report to the Board, Authority Director Patrick Peck reported that collection last month was up 5.1% over last year and that illegal dumping has again become a matter of concern. He also:

- Asked for Board approval to pursue the development of a transfer station in the southern part of the county. This would be a multi-year project because of the need to work with the Bureau of Land Management, the NM Land Office, and private entities in the acquisition of land and of development permits. Permission was given to begin cost analysis processes.
- Gave the Board a heads-up on potential action relating to solid waste collection and disposal in the upcoming 60-day session of the NM Legislature. He will keep the Board advised as bills are presented during the session.
- Asked for Board approval to expand administrative facilities at the Authority's Solid Waste Transfer Station on Amador. The Board recommended that an architect be hired to do a preliminary design so that costs could be estimated.
- Reported that he'd met, on separate occasions, with White Sands Missile Range officials and representatives from Truth or Consequences and Sierra County about solid waste management issues in their respective areas. Adding their collection tonnage to that of Doña Ana County would mean increasing revenues for the Authority.

Before adjournment the Board also discussed and approved several resolutions dealing with

equipment purchases, already budgeted, and with labor issues.

Las Cruces Public School Board Meeting, October 19, 2010, 6:30 p.m., School Board Conference Room - Nancy Phillips, Observer

All Board members except Serena Shoup were in attendance. President Connie Phillips called the meeting to order at 6:30 p.m. The minutes of Board meetings over the past month were approved without amendment.

Consent Agenda Items were approved unanimously. Most significant item approved was the rescission of agreement between Alternative Industry Resources (A.I.R.) for Solar Licensing. This agreement was approved at the September Board meeting. Reasons cited were problems with regulations and the law, but no specifics were forthcoming. All other items were related to routine budget matters.

Public input included: (1) Chris Perez spoke on the issue of a road easement through his property. He requested that all crushed debris be removed from his property with a significant amount of progress toward that goal accomplished by December 2, 2010; (2) Parent Marcos Torres praised the district for its video on solar energy, saying it was a valuable lesson for his children (and all students in the district). He requested that the Board postpone the rescission of agreement between A.I.R. until a later date when the public could provide more input. He also indicated that more transparency in the negotiations was necessary; and (3) Larry Mills from the solar energy project described his diligence in working with the principals of all the schools, acknowledging their cooperation and enthusiasm for the project, which would provide solar energy, shaded areas on the grounds and save hundreds of dollars for the district. He has lined up many local

(Continued on page 10)

LEAGUE OBSERVER REPORTS (Continued from page 9)

School Board *(Continued from page 9)*

workers and said the schools are oriented in the right direction to utilize the sun effectively. He wondered why the district would give up the chance to receive federal funding for the project.

Recognitions: Nikolina Keyes, teacher from San Andres High School, was named New Mexico 2010 Preserve History Teacher of the Year.

Superintendent's Report:

- Accepted US Bureau of Land Management land patent for Sonoma Elementary School property that allowed purchase of 15.14 acres of federal land at a very reduced price.
- Mesa Middle School will be completed and open for occupation by the second semester. However, parts of the completed school will be open October 21 on a temporary basis, and sixth and seventh grade classes will begin November 3.

Instruction: Dr. Sanchez recognized all teachers who worked on The Educational Plan for Student Success that sets goals and specific strategies for students to achieve success. The plan will be reviewed with feedback on November 1, and will be continually reviewed throughout the school year. There will be a mid-year report of progress to decide on alterations, if any, during the Board retreat. Current goals are as follows:

- Interventions to remediate/expand opportunities for all students.
- Reading/language arts proficiency – needs improvement.
- Math has seen improved progress.
- Proficiency in English and reading for English Language Learners.
- Teachers want 100% of all students to be proficient.
- Increase the graduation rate in Las Cruces high schools.
- Continue to provide safe, drug-free schools.
- Increase parent involvement in education.

English Language Learner (ELL) goals are measured by a special testing system called ACCESS (assessing comprehension and

communication in English for Spanish speakers) because ELLs have not been meeting the standard annual yearly progress (AYP) goals for math, science and social studies.

Dr Sanchez gave an update on Spaceport activities which included:

- Programs to support a technically literate workforce (literacy in science and math) focusing on grades 6 through 12.
- Collaboration with NMSU and DACC.
- Interdisciplinary course in science, math and writing for high school students beginning in the summer of 2011.
- Professional development for teachers and staff in "supercomputing."
- College Board to expand pre-advanced placement and advanced placement courses.
- Send middle school students to the NASA Aerospace Education Laboratory at NMSU.

Tracie O'Hara of the Assessment Division in the district gave a report on the previously mentioned ACCESS program purchased by the district from a vendor named Wida. The testing is required by federal law (Title 1) to be given annually (in February in Las Cruces) to all ELL students whether or not they are in a bilingual program. The five levels of English proficiency are in social and instructional language and academics in language arts, math and science with clusters of grades Pre-K-K, 1-2, 3-5, 6-8 and 9-12. Performance is measured at entering, listening, speaking, reading and writing levels at tiers A, B and C. Training for teachers and staff is provided in testing, interpreting results, designing programs and student placement. Substitutes from the bilingual pool are provided for teachers in training sessions. During the 2009-10 school year, 3,255 students in the entire district were tested. While results were disappointing, it was admittedly only for a one-time period, and it is predicted that the second year will be better.

Operations:

- Gloria Martinez reported on all construction projects which are on schedule.
- Cathy Mathews made a presentation on the Alameda Arroyo recreational trail resolution and temporary easement which was approved by the Board.

New Business

- Las Montañas Charter School policies were approved with one abstention (Davis).
- First reading and discussion on staff compensation, reduction-in-force and violent, gang and/or gang-like activities.

The meeting was adjourned at 9:05 p.m.

Las Cruces Public School Board Meeting, September 21, 2010, 6:30 p.m., School Board Conference Room - Nancy Phillips, Observer

All Board members were in attendance. President Connie Phillips called the meeting to order at 6:30 p.m.

The Mayfield High School Drama Dept. performed a brief two-person musical play which won an award at a recent competition.

The minutes of Board meeting on August 17, 2010 were approved without amendment.

Public input included: (1) A former employee of Las Cruces Public Schools (LCPS) requested that the Mesilla Elementary School be renamed John Paul Taylor Elementary School in honor of Mr. Taylor, who influenced education in Las Cruces for many years; (2) Sam Bone of the NAACP reported that an anti-Obama t-shirt was being distributed in schools in Hobbs, with a quote from the Bible saying "...let his wife be widowed..." He requested that anyone in Las Cruces report to him at 526-8528, or to LCPS Administration, if these appear at any local school; and (3) Doug Brown asked that the request for proposals (RFP) for a spaceport education program include oversight of fund expenditures.

Recognitions:

- Two Las Cruces area Census 2010 workers were recognized for successful job performance – 71% return of surveys compared to 72% in the nation.
- A check from Comcast Cable Co. to LCPS in the amount of \$16,600 for partnering in the effort to re-paint East Picacho Elementary School; and a check to the principal of that school for \$8,300.

Superintendent's Report:

- Requested support for General Obligation Bond D, funding for improving the aging infrastructure of our colleges and universities, totaling \$155 million for 30 schools.
- Resolution in support of Bond B, funding for libraries and public school libraries to enhance audiovisual equipment and services. This resolution was approved by the Board.
- The Board approved a resolution for the issuance and sale of LCPS general obligations refunding bonds from 2001, 2002 and 2003.
- The Board approved the name, colors and mascot of The Early College High School chosen by students, teachers and community: Name is Arrowhead Park Early College High School; mascot is Trailblazers; and colors are crimson/gold/black.
- Superintendent Rounds announced that LCPS won an award for being the best district in New Mexico for technology equipment and services, and for being Number 8 in the nation for technology.

Instruction: Dr. Sanchez reported on several instructional programs that were offered over the summer or are in progress now: A K-5 language arts program for dyslexic students; an extensive summer program in which students were exposed to math, science, and engineering subjects having to do with the aerospace industry. Over 200 middle and high school students and teachers participated.

Operations:

- A new branch library is being added to San Andres School to enhance public access to public library services. Many partners, including Branigan Library, are working toward completion. The old cafeteria is being remodeled and more age-appropriate books are being added to the collection there. Evening hours will be staffed by Branigan employees.
- Agreement between LCPS and Alternative Industry Resources (A.I.R.) for solar energy licensing. Presented by a senior staff member of A.I.R., who said federal funding for this all-district project will expire at the end of 2010 and a company in Spain will partner with A.I.R. to execute it. The cost for solar energy will be the same as today's energy cost, and the investment will be paid back at the end of ten

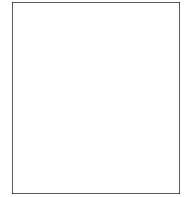
(Continued on page 12)



League of Women Voters of Greater
Las Cruces
P.O. Box 8322
Las Cruces, NM 88006-8322

LEAGUE OF
WOMEN VOTERS®

(575) 524-VOTE (8683)
Web Site: www.lwvglc.org



FIRST CLASS

November 2010
In This Issue

Lunch With A Leader 1
 President's Message 2
 Look Back - United Nations 2
 Look Back Lunch 3
 Affordable Housing 4
 Voter Services 5
 "What's on Your Rooftop" 6
 El Paseo Corridor 7
 NM Government Task Force 7
 League Observer Reports 9-11

School Board *(Continued from page 11)*

years of production, (40% renewable energy credits, 30% test cash rebates, 30% electrical production). After the Board was satisfied with answers to a few questions, the agreement was approved unanimously.

New Business: The Board approved Agreements between LCPS and National Education Association (NEA) (certified personnel) and Classified School Employees Council (CSEC) (classified employees). Both Agreements included salary scale and evaluation of teachers and staff, as well as improved access to school buildings outside of regular school hours.

The meeting adjourned at 9:20 p.m.

***COMMUNITY
SUPPORTERS***

- John Ameriks, M.D.
- Joseph P. Camunez, DDS
- Citizens Bank
- Dental Associates, PA
- Donald and Winifred Dresp
- Adrian and Jackie Edwards
- Edward Jones - Connie Lee
- First New Mexico Bank
- Lilley Law Offices
- Louise P. Lockhart
- Francisco Mario Ortiz Law Firm
- Tom Tate
- Zia Engineering & Environmental
Consultants

Thank You



**2nd Annual Las Cruces
Electronics Recycling Day**

When: November 13 - 9 a.m. - 1 p.m.
Where: Dona Ana County Government Bldg., 845
 N. Motel Blvd., Las Cruces
What: Any and all electronics



**Early Vote thru
October 30.**
**General Election
November 2**