

2021 VOTERS GUIDE



LWV

LEAGUE OF WOMEN VOTERS[®] OF SOUTHERN NEW MEXICO

(Formerly League of Women Voters of Greater Las Cruces)

Copyright 2021 Prepared by the
League of Women Voters of Southern New Mexico

League of Women Voters of Southern New Mexico:
P. O. Box 15142, Las Cruces, NM 88004
www.lwvsnm.org Tel: (575) 524-VOTE (8683)

The League of Women Voters of Southern New Mexico (LWVSNM) is a nonpartisan organization that provides information about political issues and candidates for public office in order to promote greater citizen responsibility and participation in government. Because the League is nonpartisan, it DOES NOT support or oppose any political party or candidate. It DOES publish and distribute factual information for citizens to use when preparing to vote.

The information in this Voters Guide was obtained from the candidates who posted answers to questions asked of them in Vote411.org. Their answers were downloaded and printed by the League exactly as the candidates answered them. Because of space restrictions in printed guides, candidates' answers were limited in length.

Disclaimer: Material in the voting Information section was correct as of September 13, 2021. The League is not responsible for any changes made by the Doña Ana County Bureau of Elections between that date and the election.

**The League of Women
Voters of Southern
New Mexico**
<https://www.lwvsnm.org/>

LWV



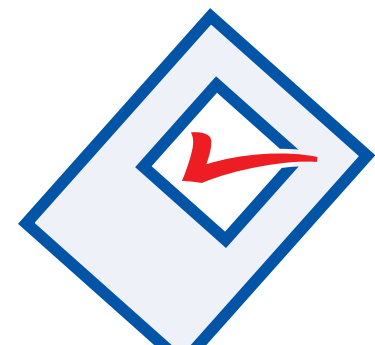
LAS CRUCES GENERAL ELECTION TUESDAY, NOVEMBER 2, 2021

A Regular Municipal Election will be held on Tuesday, November 2, 2021.

If you are a citizen of the United States, 18 years of age or older on election day, a resident of the city and/or school district and are registered to vote in Doña Ana County, you may vote in this election.

**If you have a question concerning the election, please contact the
Doña Ana County Clerk's office at (575) 647-7428 or the online website:
<https://www.DACelections.com>.**

The Voters Guide is linked to the LWVSNM website www.lwvsnm.org



THE LAS CRUCES
Bulletin

VOTING INFORMATION

REGISTERING TO VOTE

Registration was closed by the County Clerk on October 5, 2021 EXCEPT at early voting locations prior to voting.

VOTING BEFORE ELECTION DAY

Absentee Voting

- Registered voters are eligible to vote by absentee ballot.
- Registered voters must request an absentee ballot before each election they wish to vote via absentee ballot.
- Absentee voting APPLICATIONS must be received no later than Thursday, October 28.
- BALLOTS must be returned in the provided envelopes by 7 p.m. on Election Day.

A person who willfully and with knowledge and intent to deceive or mislead any voter, precinct board, canvassing board, county clerk or other election official and who falsifies any information on an absentee ballot request form or who affixes a signature or mark other than the person's own on an absentee ballot request form is guilty of a fourth degree felony.

Voting Convenience Centers

Doña Ana County uses Voting Convenience Centers (VCCs). This allows voting at any location where voters will receive their own true ballot containing the candidates running in their district. With VCCs there is no wrong place to vote.

Early Voting

Voting at the Doña Ana County Government Center began on October 5, from 8:00 a.m. to 5:00 p.m., Monday through Friday, and will continue until Saturday, October 30. This location will also be open on Saturday, October 16, from 10:00 a.m. to 6:00 p.m., but will be closed for voting on October 11 in observance of Indigenous People's Day. The last day of early voting is October 30.

Early voting at alternate early voting locations will begin at 11:00 a.m. on Saturday, October 16 and will remain open Tuesday through Saturday from 11:00 a.m. to 7:00 p.m. until October 30.

- **ANTHONY CITY HALL** 820 Highway 478 Anthony, NM 88021
- **HATCH HIGH SCHOOL** 170 E. Herrera Rd. Hatch, NM 87937
- **DACC - SUNLAND PARK** 3365 McNutt Rd. Sunland Park, NM 88063

- **SONOMA ELEMENTARY SCHOOL** 4201 Northrise Dr. Las Cruces, NM 88011
- **DELORES C WRIGHT EDUCATIONAL CENTER** 400 E. Lisa Dr. Chaparral, NM 88081
- **LAS CRUCES CITY HALL** 700 N. Main St. Las Cruces NM, 88001
- **NMSU - CORBETT CENTER** 1600 International Mall NMSU Campus
- **MESILLA TOWN HALL**- 2231 Avenida de Mesilla, 88005

Same Day Registration will be available at all alternate early voting locations and the Doña Ana County Government Center while early voting is taking place. Qualified electors may register to vote or update their existing registration information before they vote.

Absentee ballots may be returned by voters, voters' immediate family members, or voters' caregivers at any voting site or at the Doña Ana County Clerk's Office.

For more information about the 2021 Regular Local Elections visit:

<https://www.DACelelections.com>

Voting Offenses

Voters are obligated to report voting offenses to the City Clerk or the District Attorney.

Voting offenses are:

- Any form of campaigning within 100 feet of a building containing a polling place.
- Using, possessing, or carrying alcoholic beverages within 200 feet of a polling place.
- False voting, such as, voting or offering to vote although not qualified, voting in another's name, voting more than once during a single election, or assisting another person in committing a voting offense.
- Blocking the entrance to the voting location.
- Creating disorder or disruption at the polling place.

ELECTION DAY

On Tuesday, November 2, the Voting Convenience Centers will be open from 7:00 a.m. to 7:00 p.m.

To find the extensive list of Voting Convenience Centers, go to the Dona Ana County Bureau of Elections website <https://www.DACelelections.com> and choose Election Day Locations.

PROVISIONAL VOTING

- When voting in-person, if an election

worker cannot locate or verify your information, a provisional ballot will be issued.

- This process allows voters the ability to submit their completed ballot and provides a way for the Clerk's Office to verify the eligibility of the voter.
- If eligibility is verified, the vote is counted the same as other ballots.
*If you are on parole for a felony, in prison, or a court has found you to be mentally incompetent, you are not eligible to vote or register to vote.

If you have a question concerning the election, please contact the Dona Ana County Clerk's office at (575) 647-7428 or the online website:
<https://www.DACelelections.com>

The Voters Guide is linked to the LWVSNM website < <https://www.lwvsnm.org> > You may also find information on the League of Women Voters online portal [Vote411.org](https://www.vote411.org) < <https://www.vote411.org> >

RANKED CHOICE VOTING

Las Cruces City Council Districts 3 and 5 have more than two candidates each and so there will be ranked choice voting in those districts.

What is ranked-choice voting?

Ranked-choice voting is an electoral system that allows people to vote for multiple candidates, in order of preference. Instead of just choosing who you want to win, you fill out the ballot saying who is your first choice, second choice, or third choice (or more as

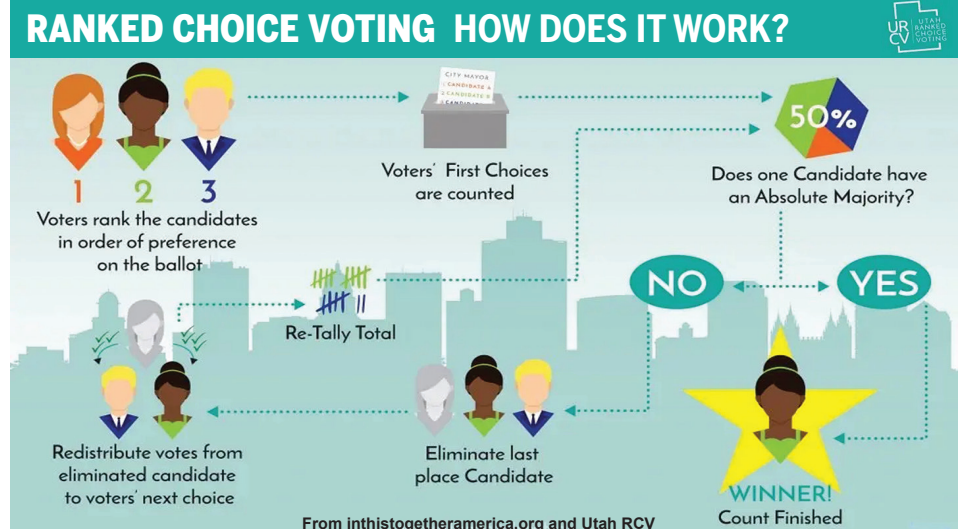
needed) for each position.

The candidate with the majority (more than 50%) of first-choice votes wins outright. If no candidate gets a majority of first-choice votes, then it triggers a new counting process. The candidate who did the worst is eliminated, and that candidate's voters' ballots are redistributed to their second-choice pick. In other words, if you ranked a losing candidate as your first choice, and the candidate is eliminated, then your vote still counts: it just moves to your second-choice candidate. That process continues until there is a candidate who has the majority of votes.

ELECTION DEADLINES

- **October 5:** Voter registration (by mail or online) was closed EXCEPT at early voting locations prior to voting.
- **October 5:** First day that absentee ballots could be mailed to voters (who have submitted an absentee application) AND first day voters could cast their votes in person at their local county clerk's office.
- **October 16:** Additional early voting locations open.
- **October 28:** Last day to request an absentee ballot at your local county clerk's office.
- **October 30:** Last day of early voting.
- **November 2:** Election Day

To see more voter information about your responding candidates, go to [Vote411.org](https://www.vote411.org) and enter your address. You might also find responses from candidates who did not respond in time for the printed editions or from communities which have no printed Voters Guides.



LAS CRUCES CITY COUNCIL

QUESTIONS FOR THE CANDIDATES FOR LAS CRUCES CITY COUNCILLOR

(500 characters each)

NOTE: ALL MUNICIPAL OFFICES ARE NONPARTISAN

1. How should the City address the need for low and moderate income housing?
2. What could the City do to better address crime in Las Cruces?
3. How will you evaluate the impact of the plastic bag restrictions going into effect on January 1, 2022?
4. If you are elected, what priorities and/or changes would you focus on and why?

Bev Courtney, Las Cruces City Council candidate District 3



1. Owning a home is the American Dream. I had a friend who lived in a \$400 apartment that was worth \$150. It was the size of a very small hotel room and was dumpy; she rented it out of desperation to shelter her daughter and brand new baby. While our current city council is concerned about plastic bags, we have low income families waiting up to a year to get approved for help. We should focus on the real issues Las Cruces faces and make sure our families come first.

2. Offer competitive wages to our police department; conduct more academies until the force is restored. We should implement a hiring freeze on other city positions until it's done. Our crime has steadily increased without a voice of reason to ask, "What's causing the crime spree?" Murder has skyrocketed in recent months. The police department could bring back a drug interdiction team. Neighborhood drug dealers - gone. Let's open the door for mental health counselors to help those most in need.

3. Mandates affect business in a negative way creating extra cost, more regulations to manage. The cost is passed on to the taxpayers without our consent. The bureaucratic bullying needs to stop. Conducting community campaigns

to encourage sustainability is a far better solution. I believe most people do want a clean environment. Plastic bag restrictions won't gain value for the city. Policies compete and impede businesses with regulations and taxes. Totally unfair advantage, transparency is key.

4. For years I have listened to peoples desire to be safe. That is my profession. Safe streets are possible. I will restore integrity to our council and advance the interest of citizens. No buying off whistleblowers. Thriving economies drive opportunity. Let's do it. Finally, our officials have gutted election laws. The result is a one party platform that only represents progressives. Everyone should use their voice to restore authentic elections. We owe it to our children and for liberty.

Becki A. Graham, Las Cruces City Council candidate District 3



1. The City should coordinate existing programs and non-profits engaged in affordable/attainable housing efforts to keep up to date with needs and resources and to ensure that educational materials about such resources are readily available to those who may benefit from them. Existing affordable housing units need to be assessed and upgraded,

as needed, to make them as secure, comfortable, and pleasant as possible. These and future units need to be situated for easy access to supportive services.

2. The City can expand availability and accessibility of services demonstrated to prevent crime, such as affordable housing and mental and behavioral health support. Design improvements such as lighting of public spaces and maintenance of unused properties is also effective. When possible, expanding or introducing community policing and outreach practices can help improve relationships between law enforcement entities and the community.

3. A review process included in the ordinance tied to this initiative will include use of paper grocery bags and environmental service fees. Additionally, surveys should be administered to retail establishments to determine number of reusable bags sold or given to customers; and to residents to gauge their feelings on the program's efficacy, benefits, and challenges. Anecdotally, residents and City employees can provide information about decreases in plastic bag litter in public spaces.

4. Economic Development: All areas must have equal opportunities for growth. Investing in existing corridors and local businesses to refurbish abandoned retail spaces, rather than only investing in new construction, will help ensure that we best use our resources.

Public Safety Challenges: Enhanced support for programs offering practical solutions to public safety issues, such as the Mobile Integrated Health initiative and its expansion into opioid overdose response and behavioral health crises.

Gregory J Shervanick, Las Cruces City Council (write-in) candidate District 3 (Picture not available)

1. Real estate is a business along with market capitalism which supports the general fund and Las Cruces is not an urban cityscape needs to be recognized first. So to tackle this issue: tight controls must be made on subdivision already platted, reduction of Elevate LC strategies, transportation choices and penalties on financial institutions and building material providers must be made. This type of planning must be done

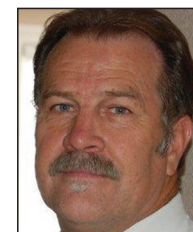
with full knowledge that equity for some is inequity for others.

2. Crime exist everywhere. I believe that the pandemic, mental health awareness and an increase of a new population have exacerbated an upward trend. The city needs to work with LCPD by listening to the concerns on staffing, retention and recruitment. Council must clearly communicate, what is good policing and what is not. Respecting those we have entrusted these ideals to and backing up these shared visions of public safety is the start to addressing this complex question.

3. I already have. Single use bag restriction was created as a revenue enhancement. A TAX. Since misleading, unethical and bias scientific information was used in its creation. The council should to repealing the resolution. Placating others beliefs because they are ecologically trendy is a poor way to protect the environment. Is it right that one city department has now become both judge and jury?

4. If I were to be honored by the citizens, I would attempt to focus my constituents on being able to use the resources made available by the city website Las-Cruces.org. This would enable them to participate and stay current with activities, projects that effect changes. Having this knowledge creates a better and transparent democracy. This would be a way to enhance change and priorities, rather have citizens ask, "we never heard about" when issues arise. Contrary is the city listening?

David A Telford, Las Cruces City Council candidate District 5



1. We could enter into a public/private partnership with builders/developers to seek funding from local and national resources such as grants and foundations

SEE CITY COUNCIL, PAGE 4

CITY COUNCIL

CONTINUED FROM 3

for such projects. We could further incentivize more building of moderate and low-income housing by simplifying the permitting process and working with Realtors and lenders to find down payment assistant programs to help qualify moderate income households wanting to purchase a home.

2. We can increase the Police Service Aide program to have more of an officer presence in our neighborhoods. We can enhance the Las Cruces Police Department Citizens Academy and increase the number of neighborhood watch programs just as an example. We can more aggressively prosecute crimes especially violent crimes to decrease recidivism.

3. I guess the best way to evaluate the impact would be reading the quarterly reports that stores are required to file with the city on how many bags are given away and how many \$0.10 fees were collected. Other than that I believe it just comes down to seeing if there's a lesser prevalence of plastic bags flying around the city.

4. If elected I would seek input from the police department to see what I could possibly do to help develop practices to lower our crime rate. I would also work to make the city an easier place for local businesses to open and flourish. Small businesses are the backbone of our community and the nation in general and I would work to help streamline regulations and permitting to make it easier for these businesses to open in Las Cruces.

Normand Robert Paquette, Las Cruces City Council candidate District 5



1. When we say "The City" I would like it to mean "The Public and City Hall" working together to find a win-win for us all. I have several years of experience working with people in Seattle low income and block housing projects as

a social worker and underprivileged minorities ombudsman. I believe low and moderate-income housing should be 1. A priority 2. Generous but accountable 3. Paired with education and opportunities to increase income levels.

2. 1. Hire more officers 2. Put a system in place to prevent a shortage from happening again. (whatever the reasons are) 3. Promote a better police-friendly atmosphere in Las Cruces to attract good officers. 4. Use Media and communications to honor the good in our LCPD publicly 5. Use technology and community involvement to augment manual police efforts to keep crime at a dull roar. Work smarter, not harder. 6. Make LC LCPD Proud to be officers.

3. I will need more information to make an informed, accurate and coherent evaluation before I can comment on this at all. I am aware of the issue, but do not have enough information to comment.

4. 1. Put Las Cruces public/businesses & needs first / others next It only makes sense to focus on home and get it in order first before we start conquering castles right? 2. We should as a City know about upcoming huge expenditures in advance with detailed information about them as well as the opportunity to weigh in with our opinions as to the public without going to city hall to the podium. 3. All this can only be done with more aggressive transparency and proactive measures. 4. Create win-wins

Ronnie M Sisneros, Las Cruces City Council candidate District 5



1. The need for the people of Las Cruces to live in safe appropriate housing is very important. A vision and goal with needed infrastructure such as roads, street lights, signs, schools, parks, as well as improve job opportunities with better pay are just as important to a viable safe populace. The specific means of how to develop strategies to meet the needs of the people is an all encompassing effort that would require input from various groups, investors, community leaders,

and church leaders.

2. This question has been relayed to me on many occasions. I can easily say there is no reason to reinvent the wheel. Local city police have been an establishment and historical bedrock of modern civilized societies for hundreds of years. The police must know they have the support of the communities that they live and serve irregardless of societal shifts. A sense of consistency and commonsense approach to law-enforcement is needed, although I do not believe in being an armchair quarterback.

3. The only way to evaluate progress or decline in any effort is through consistent unbiased data collection. After data in several established and agreed-upon areas this data can then be reviewed by panel of experts, community leaders, sanitation, and all other relevant groups and agencies. The goal will be to review the efficacy of and make needed adjustments to get a clear picture of this ordinance. I do support this ordinance with certain reservations.

4. My priority would be to bring a conservative minded common sense approach to everything that comes before me. I would pursue every avenue to have the name of Onate High School to be reinstated. The citizens of District 5 and Las Cruces have spoken loudly on this issue but were ignored. improve roads, sidewalks, drainage, especially on Mesa Grande and Highway 70 and other areas all over District 5. Develop youth recreational center in District 5.

Becky Ann Corran, Las Cruces City Council candidate District 5



1. As a City, we can do several things to address affordable housing: 1. utilize zoning guidelines for new developments to promote affordable housing and promote infill in older parts of town; 2. support the rental community by strengthening landlord-tenant codes; and 3. consider creating an affordable housing trust. It is critical that Las Cruceans have the opportunity for safe housing, and

through partnerships with community agencies and innovative policies we can ensure that residents thrive.

2. The city can invest in short- and long-term violence reduction initiatives that focus on the many dynamic factors that lead to crime, and in many areas, it already is. Some opportunities to better address crime include: 1. partnerships with community agencies that focus on prevention of child abuse, domestic violence and addiction; 2. utilize community-based data to develop a data-driven strategy; 3. advocacy for full funding of state and local courts.

3. The existing ordinance will be reviewed after two years, but there are opportunities to evaluate the impact in the shorter term. This calls for evaluating both the commercial/individual impacts and the environmental impact. Specifically, the City can: 1. track paper bag fees that are already planned to identify patterns; 2. outreach to retailers to identify impacts; 3. focus groups with residents and community organizations that pick up litter to see impacts on the local environment.

4. My priorities would be: 1. inclusive city planning through residents' voices to build walkable neighborhoods, affordable houses, green spaces and clean air; 2. economic recovery grounded in small businesses and nonprofit support that creates opportunity; 3. incentivizing employers that provide living wages, pathways to education and health; 4. reduced impact on climate change through the Climate Action Plan and advocacy for shifting utility use and distribution to reduce fossil fuels.

Yvonne Flores, Las Cruces City Council candidate District 6



1. Change ordinances to allow infill incentives; buy public land for community housing.

2. Expand an industrially based economy; promote community policing; support education and job training.

3. The impact will be data driven.

4. Roads, infrastructure, preservation of historic buildings, education, housing, behavioral health, sustainability, economic development, art, animals; follow the Comprehensive Plan to assure a healthy community.

William John Beerman, Las Cruces City Council candidate District 6



1. The City should address this using a sound decision-making methodology, such as systems design and analysis, which I studied at the university level.

I also reviewed thousands of audit findings about government operations and each audit finding identified the root cause of a problem and addressed it with appropriate recommendations. We need to identify the root cause(s) of the housing problems and address them. We also need to consult experts, such as those at Mesilla Valley Community of Hope.

2. The City has plenty of money for other things and should fund a first-class Police Department, which is the one department we would keep if we could keep only one. City Council's efforts to defund the police during a crime spree have been exposed. They let the department fall to 75 percent of capacity. Now during an election they are publicizing one-time bonuses and other gimmicks, instead of providing respectable, competitive long-term salaries commensurate with the respect our police deserve.

3. I would take an objective approach

even though I am skeptical. Of course, I would have to prioritize my workload as a City Councilor and I might have more important work that would take precedence. That said, I would consider the input of the bag-restriction advocates, and pay close attention to the experiences of businesses who have to cope with enforcing the restrictions and complying with the reporting requirements. I see more discarded facemasks littering the town than I do plastic bags.

4. I would focus on two problem areas: corruption and socialism. Regarding corruption, the 767-page McHard investigative report said violations of laws, regulations, and policies were "rampant" within city management. The City also paid \$1.4 million to settle whistleblower lawsuits. City Council's Socialist ambitions are too numerous to mention here. I will press hard for the City to establish a world-class internal audit function to provide oversight and consulting services for city managers.



LAS CRUCES PUBLIC SCHOOLS (LCPS) SCHOOL BOARD

QUESTIONS FOR THE CANDIDATES FOR LAS CRUCES PUBLIC SCHOOL (LCPS) SCHOOL BOARD

(500 characters each)

1. What do you think are the strengths and weaknesses of the Las Cruces Public Schools?
2. Do you think funding should be expanded for multicultural education in public schools? Explain.
3. How would you change the priorities of the school district as reflected in the district's budget?
4. What changes, if any, would you propose to support online learning?

Raymond M Jaramillo, LCPS School Board candidate District 1



1. As a parent and board member, I have witnessed our educators' dedication to creating an inclusive, healthy, safe educational environment for students. Wrap-around services, culturally relevant curriculum, extended learning opportunities through Community schools are other areas of strength. Also, the district Student Advisory Council provides a unique perspective to the board. Historically, the lack of consistency at the superintendency position could be considered a district weakness.

2. Yes! Students feel included and benefit when education incorporates

the histories, culture, beliefs, and multiple perspectives that represent the cultural diversity we see in our classrooms and schools. I would support the expansion of multicultural education to include family diversity, gender, sexual orientation, and students with disabilities. Education should include the written and verbal perspectives of people living these experiences.

3. One of my favorite quotes is, "Don't tell me what you value, show me your budget, and I'll tell you what you value."-J. Biden. Anytime you develop a budget, it must reflect the overall goals and mission of the district. Any changes to the district budget must reflect the voices of the multiple stakeholders within our community. Providing the platform & avenue for all stakeholders to provide input is vital to establishing priorities that lead to achieving the district's vision, mission, & goals.

4. The district has done an exceptional job and has set the bar across the state in reimagining education that includes 21st-century

technology in support of online student learning. Through the expansion of the Virtual Learning Academy, Canvas, and professional development, the district has created opportunities for all students who choose to attend virtually.

**The League of
Women Voters
of Southern
New Mexico**
<https://www.lwvsnm.org/>



**Abelardo Balcazar,
LCPS School Board
candidate District 1**



1. Teachers, support staff, administrators, parents, students, and the support of the community are the strengths of LCPS. A lack of strong leadership among past and current school board members is its great weakness, particularly the board's dismissive approach to involving parents and the community at large.
2. Curriculum and programs that have clear and measurable goals and that directly benefit the entire student body's academic growth and achievement must be expanded and funded appropriately. If proposed multicultural education plans are proven to meet these basic standards, then I am in favor of expanding them.
3. Middle school is the critical point in a student's future success. Yet, educational opportunities for middle school students is ranked near the bottom. Parental involvement is ranked even lower, at less than 1 percent. Parents are the corner stone of a child's education. How can we blame parents for not being involved when we don't prioritize their involvement? I would make these top priorities as well as adding after school programs, STEM, and career education programs for high school students.
4. While we need to utilize all available tools at the disposal of our teachers, we must not let these tools render our teachers disposable. The human element in the relationship between teacher and pupil cannot be replaced by technology. Instead we must integrate technology to enhance the human learning experience to its fullest.



**Henry A Young,
LCPS School Board
candidate District 2**



1. In general, the facilities range from fair to excellent and are distributed around the districts well. We should look at the districts in the near future to have more equal numbers of schools in each district. The teaching methods can be more beneficial by incorporating systematical use of multiple subjects which allow the students to see how everything can be used in their future professions. The determination of success in education is reported on state level.
2. More money is not the answer for producing better results for any type of education. The way that available funds are used is the key to having excellence in education. Use of history and language arts, taught properly, is the key to having the most well rounded presentation of multicultural education.
3. The main priority of budgeting monies should always be to get the money to area(s) that best fit the goals of the system. This means that most of the money should go to the classrooms. This is the opportune time to offer early retirement to a top heavy school system, and get that money back to the classroom level. This is now happening at the higher education level and in many corporate level industries. The monies should be used in the best interest of our students and teachers.
4. Online learning has been used in NM before COVID. The current system for online learning is a charter school system which is funded through a school system within New Mexico but the teachers are paid by the state. Hopefully the charter will be taken out of that school system, held by the state so that all the funding can go directly to the students in online learning. This is beneficial because it allows students with special needs to work from home and have teachers available to help.



**Pamela M Cort,
LCPS School Board
candidate District 2**



1. LCPS works hard to make sure all its students are successful. Everyone works for the benefit of the children and does the best they can with the resources they have. I think we should prioritize people over resources. Students learn best when community is established before curriculum. I visited an elementary school where there are 30 students in one kindergarten class! This is difficult for the students and the teachers. Students learn best when they feel a connection to their learning.
2. Yes. This goes back to the Yazzie-Martinez lawsuit and student connection. Culturally and linguistically responsive teaching allows for ALL student voices to be heard and validated. Multiple perspectives permit students to make connections, comparisons, and associations but, above all, they learn from each other's life experiences. This creates better empathy and promotes a broader world view, which in turn produces global citizens that understand and appreciate other languages and cultures.
3. As mentioned earlier, I would prioritize people over resources. I understand that the digital divide widened during the pandemic, but living in a technological void does not serve our students or our world very well. People need to interact with each other. This is how our society survives. We need more well-qualified educators who can give our students the attention, love and support they need. I believe in community first, curriculum second. People are our most important resource.
4. LCPS is doing a great job with our virtual academy. The district is reaching out to other, smaller districts and sharing our infrastructure so that all students, no matter where they live, have access to a computer and the internet. Again, I would increase the staffing. I found out that an elementary teacher had a virtual class of 64 students! Teachers cannot give the students the instruction they need with overflowing classrooms. Research

shows that smaller class sizes promotes better learning.

**Robert C Wofford,
LCPS School Board
candidate District 3**



1. Strengths: The perseverance of educators, families, and volunteers dedicated to providing students with opportunities to succeed by inspiring curiosity, nurturing imaginations, and instilling a love of learning. Weaknesses: Our schools need to be adequately staffed and resourced. They must address the whole student—their social, mental and physical health and nutrition requirements and their academic needs. Our students need access to engaging materials, up-to-date technology and approaches.
2. Absolutely. We have a proud heritage in New Mexico, emerging from the indigenous people here for countless generations, to those who came to settle this land. We need to embrace our linguistic and cultural differences and recognize that our shared values are strengthened by our diverse backgrounds. We need to talk honestly about our histories and fully fund practices and programs designed to deepen our understanding. I welcome the opportunity to address this as a school board member.
3. We must direct American Rescue Plan money to where our students need it most, including additional staffing, safe facilities, and up-to-date technology; invest in community schools which integrate health and social needs into the schools involve parents, students, and educators; work to address educator shortages through effective mentoring, manageable class sizes, and wage increases to improve recruitment and retention; and review the budget focused on our goal: student success and well being.
4. We need to continue to improve access to technology and high speed wi-fi for students, families, and staff. LCPS has an excellent Virtual Learning Academy, but we need to add staffing, training, and planning time to

appropriately design and support online learning for all classes. We need to reduce class sizes and add tutoring to increase individualized attention and keep students fully engaged, integrating safe face to face and online learning.



**Eloy Francisco Macha
Camborda,
LCPS School Board
candidate District 3**



1. Strengths of Las Cruces Public Schools lie in our community leaders, our parents and our educators as they have stepped up over the years to help, assist and provide ideas to organically improve our School District. Weaknesses in the Las Cruces Public Schools is the diversion of limited resources from

the Academic Success of our Students, which is felt in our classrooms. In addition, our PTO/PTAs, Parent/Educator partnerships and Community involvement have greatly diminished over the years.

2. Our Las Cruces community is, has been, and will continue to be a multi-ethnic community. In part of this great heritage, our community welcomes all born here and abroad with open arms. Our School District's focus is to provide equal opportunities of education to all of our community's Students. Prioritization and focus of our limited resources needs to be for the Academic Success of our students. Our Arts and History program electives in cultural education would be a subsequent priority.

3. A primary goal of our School District is to ensure our Students are provided the adequate resources for their

Academic Success. This translates to ensuring existing Academic programs and those that enhance our Student's Academic Success, such as Gifted Programs, Magnet Programs, Trade/Vocational Programs and similar, are properly funded. Our classrooms are our educational frontline - the majority of our School District's budget needs to be represented and felt in our classrooms.

4. LCPS needs to adopt proven technologies in support of both distance and online learning, which include modernizing our school facilities to enhance a hybrid education delivery model, and that of training our educators in both distance and online learning teaching methodologies. LCPS needs to provide to our students pre-recorded class sessions, smaller online classes, and enhanced online interactions, including gamification of education.

TOWN OF MESILLA BOARD OF TRUSTEES

**QUESTIONS FOR THE CANDIDATES FOR THE
TOWN OF MESILLA BOARD OF TRUSTEES**
(500 characters each)

1. If you are elected, what priorities and/or changes would you focus on and why?

2. How would you address the infrastructure needs of your community?

3. What budget changes, if any, would you make? Explain.

4. How do you plan on keeping future generations living in and involved with your community?

**Lucas C Arzabal, Candidate
for Mesilla Board of Trustees**



1. Arzabal is committed to serving the residents of this community and doing so with transparency, and integrity. He plans to help the Town of Mesilla by continuing to listen to the residents of Mesilla, and has actively done so by going door-to-door to listen. "My passion for Mesilla runs deep, but my passion to serve the people of Mesilla runs further,"

he says. Arzabal is a historic preservation supporter, and also supports agricultural land and open space.

2. I will continue ask our Public Works Director and Town Clerk to be looking for grants to address infrastructure needs. I will continue to work with our State Representative and State Senators for capital outlay money to help balance The town of Mesilla needs.

3. Budget is always an important topic that needs to be addressed. The town has been very fortunate to not have any layoffs or have any hours cut from the employees. I feel as long as the town continues to look at the budget every month, we will be putting the town in a good standing in regards to our budget.

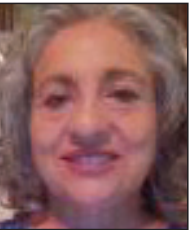
4. I plan to continue to listen to our constituents of Mesilla. I Will

continue to go door to door and ask if the constituents have any questions or concerns regarding The Town of Mesilla.

**Adrianna Cecilia Merrick,
Candidate for Mesilla Board
of Trustees**

Did not respond in time for publication

**Biviana M Cadena,
Candidate for
Mesilla Board of Trustees**



1. Priorities are focused on meeting the needs of the citizens of the town of Mesilla. These include preserving our way of life. Listening to people especially those that have been in Mesilla for generations. Establishing a well rounded approach to solving issues faced by the people in our community. At the same time considering climate change, technology advances, job opportunities,

planning and zoning rules, and partnering with nearby communities to maintain safety.

2. Infrastructure is critical to Mesilla. Mesilla is a beautiful place not only because of it's physical character, but because of our citizens. It is important to support every aspect of infrastructure so that the people of Mesilla can continue to live in Mesilla. We must take a wholistic approach in solving issues that best meet the needs of all our citizens. We have a wonderful community of the old, young and everyone in between and we need insure that it is affordable for all.

3. Budgets are always the biggest most important aspect of any community. I would focus on making sure that the priorities of our citizens are reflected in the budget. There is always places where changes are needed to better serve the community. Budgets must be reviewed regularly and adjusted with integrity and transparency. Accountability in government is non negotiable.

4. Keeping those that want to stay and live in Mesilla is paramount. Involvement in the community will keep the young and future generations in Mesilla, enriching their lives and the lives around us. My plan is to ask them what they see as the future of Mesilla and what they would like to see in their government. Most important is to really listen then plan and implement.

TOWN OF MESILLA MUNICIPAL JUDGE

QUESTIONS FOR THE CANDIDATE FOR THE TOWN OF MESILLA MUNICIPAL JUDGE

(500 characters)

1. What prepares you for the position?
2. What would your priorities be as a municipal judge?
3. What court procedures, if any, would you change?
4. Do you think municipal judges should be attorneys? Explain.

Donald E. Toomey, Candidate for the Town of Mesilla Municipal Judge



1. I was an attorney for 20 years prior to retirement. I also served as a panelist on child custody, visitation and

support cases. I was a partner and later the senior partner of a law firm having more than five offices. I had served as an alternate Municipal Judge in Mesilla for over 5 years before being appointed as Municipal Judge in Mesilla more than 1 1/2 years ago. I have efficiently and professionally handled cases and been thanked by over 90% of litigants. I appreciate serving!!

2. My ultimate priority is to treat all who come before me fairly, refrain from punishing but rather encourage obedience to rules. I am proud to have the huge majority of people who have appeared before me leave with a good feeling that the Court has treated them properly.

3. I have already chanced a few by adding a bailiff and new Court Administrator. We have dealt with the logjam of over 11 years of uncollected fines efficiently and humanely. I believe that any defendant needs to be treated as a human being and given ample opportunity to present their case and explain their position.

4. I do. I think a background in the law is imperative to prepare for the job of Municipal Judge, to understand the law and the law's intent.



LAS CRUCES GENERAL OBLIGATION BONDS AND TAXES

LAS CRUCES GENERAL OBLIGATION BONDS AND TAXES

Las Cruces School District Number 2

General Obligation Bond Question:

"Shall the Board of Education of the Las Cruces School District No. 2 be authorized to issue general obligation bonds of the District, in one series or more, in the aggregate principal amount not exceeding \$50,000,000, for the purpose of (1) erecting, remodeling, making additions to and furnishing school buildings, (2) purchasing or improving school grounds, (3) purchasing computer software and hardware for student use

in public schools, (4) providing matching funds for capital outlay projects funded pursuant to the Public School Capital Outlay Act, or (5) any combination of these purposes, said bonds to be payable from general (ad valorem) taxes and to be issued and sold at such time or times upon such terms and conditions as the Board may determine?"

Las Cruces School District Number 2

Public School Capital Improvement Tax Question:

"Shall the Las Cruces School District No. 2 be authorized to continue to impose a property tax of \$2.00 per each \$1,000.00 of net taxable value of property allocated to the Las Cruces School District No. 2 for the property

tax years 2022, 2023, 2024, 2025, 2026 and 2027 for capital improvements in the District and New America School-Las Cruces and Raices de! Sabor including payments made with respect to lease purchase arrangements as defined in the Education Technology Equipment Act or the Public School Lease Purchase Act, but excluding any other debt service expenses, for: (1) erecting, remodeling, making additions to, providing equipment for or furnishing public school buildings and pre-kindergarten classroom facilities; (2) purchasing or improving public school or pre-kindergarten grounds; (3) maintenance of public school buildings or public school or pre-kindergarten grounds, including the purchasing or repairing of maintenance equipment and participating in the facility information management

system as required by the Public School Capital Outlay Act and including payments under contracts with regional education cooperatives for maintenance support services and expenditures for technical training and certification for maintenance and facilities management personnel, but excluding salary expenses of school district employees; (4) purchasing activity vehicles for transporting students to extracurricular school activities; (5) purchasing computer software and hardware for student use in public school classrooms; and (6) purchasing and installing education technology improvements, excluding salary expenses of school district employees, but including tools used in the educational process that constitute learning and administrative resources?"



The League Of Women Voters of Southern New Mexico

LWVSNM Voter Services: Dale Yeo, Chair, and Voters Guide Editor. Thank you very much Helen Zagona and LWVSNM Board members. Acknowledgments and thank you to LWVSNM members and friends for

their contributions to our 2021 Municipal Election Voters Guide. Many thanks to the Las Cruces Bulletin, Richard Coltharp, Publisher; Albert Vasquez, Special Sections and the staff of the Las Cruces Bulletin. Thank you especially to Gerald Smola and Camino Real Media, for translating and publishing our Spanish edition of the Voters Guide.

If you wish to contribute to keep our voter education work possible, go to our website <https://www.lwvsnm.org> and contribute by PayPal or you may mail a check to LWVSNM, P.O. Box 15142, Las Cruces, NM 88004. Contact the League by phone at 575-524-VOTE (8683). Thank you for your support.

